

ENSIGN SYMPHONY & CHORUS PRESENTS

# Joy to the World

Featuring  
Ensign Youth & Children's Choirs

*Ensign*  
SYMPHONY & CHORUS





## SELLING REAL ESTATE SINCE 1990

Serving Seattle's Greater Eastside

"From start to finish, Leslie is the consummate professional! Her industry knowledge, counsel and direction were amazingly accurate, honest and timely. We simply could not have asked for any better than what we got from Leslie!"

- Phil & Cathy Bussey

"Leslie, Denny, and Shaina were simply outstanding! Their comprehensive pricing analytics were well-thought out and rational and the staging was superb! I recommend Leslie and her team to anyone wanting full service in the truest sense of the word."

- Bryn & Marita Lane



**LESLIE HANCOCK - Managing Broker**  
206.909.4663 | Leslie@TeamHancockRE.com

**DENNY HANCOCK - Broker**  
425.395.6591 | Denny@TeamHancockRE.com

[www.TeamHancockRE.com](http://www.TeamHancockRE.com)



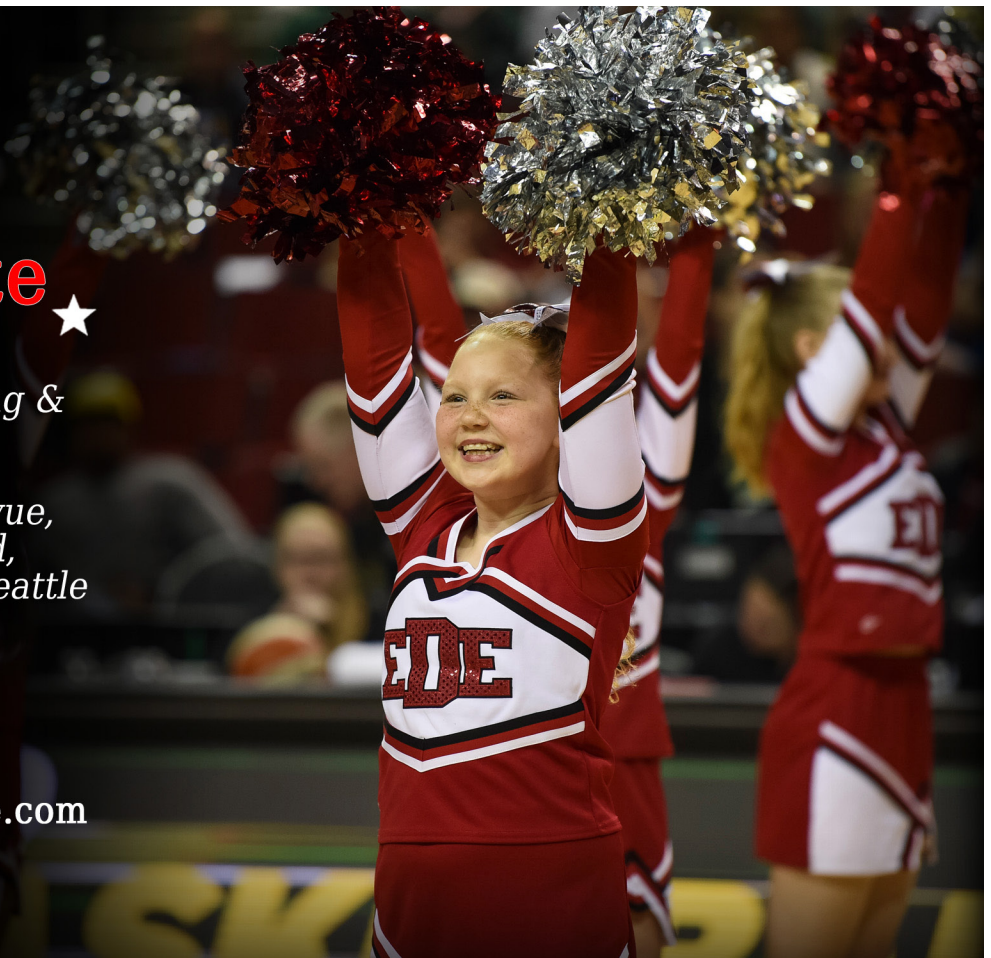
## ★ ★ Eastside Dream Elite ★

Recreational cheerleading & dance for ages 5-18.

Classes offered in Bellevue, Renton, Mercer Island, Kirkland, Issaquah, and Seattle (Ballard).



[www.EastsideDreamElite.com](http://www.EastsideDreamElite.com)  
425-246-9636



# Steve's Note

Throughout the millennia of human existence, many days have been set apart as holy days, a day to remember, to reflect, to realign. Indeed, as many ways to celebrate each one have been created as the number of days that there are: gifts are given, families gather, decorations displayed, fireworks deployed, traditions adopted, candles lit, and prayers offered. But despite the various holidays and the myriad ways of celebrating, one symbol has become universally accepted as a form of celebration: the Bell.

Bells have been used over the years to mark time, drive off evil spirits, and denote the passing of a loved one. But more importantly, bells have been used to celebrate victories, religious services, and indicate the advent of a holy-day. At this Christmas time, Christians use the bell as a call to the world: Joy to the world, the Lord has come! O come, all ye faithful! O come ye to Bethlehem!

It is easy to imagine the angels descending from heaven to the shepherds singing, “Gloria in excelsis Deo,” while being accompanied by the peals of a bell choir. Bells have become so ubiquitous with the celebration of Christmas that even the secular songs retain the celebration of the bells such as Jingle Bells, The Carol of the Bells, Silver Bells, etc.

Tonight, we invite you to join with us in our celebration! It is a chance for us to consider well and bear in mind “what our good God for us has done: in sending his beloved Son” (*Wexford Carol*). The angels told the shepherds, “Go and Find,” and they, with us, now invite you to “Come and See!”

Merry Christmas and a Happy New Year to all from the Ensign Symphony & Chorus!

**Steve Danielson**

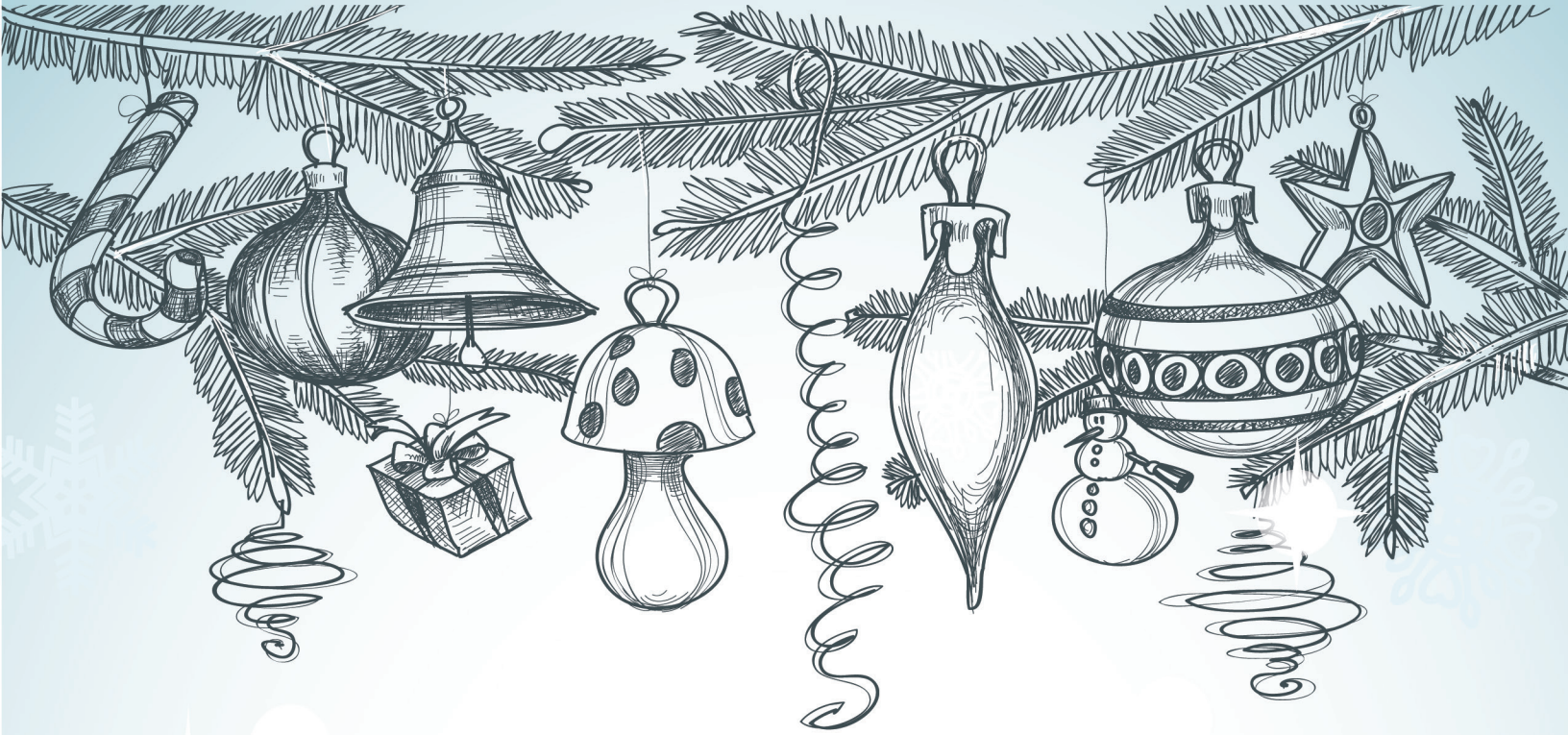
Ensign Symphony & Chorus Conductor



FOLLOW US ON:

 [facebook.com/SeattleEnsign](https://facebook.com/SeattleEnsign)  [@SeattleEnsign](https://twitter.com/SeattleEnsign)  [instagram.com/SeattleEnsign](https://instagram.com/SeattleEnsign)  [SeattleEnsign.org](https://SeattleEnsign.org)





## SPIRIT OF THE SEASON

*Text by Alan Silvestri*

It's the spirit of the season  
You can feel it in the air  
You can hear it if you listen  
Everywhere, so much care, like a prayer  
Whatever it is, you need to share it

It's the spirit of the season  
You can feel it in the air  
People smile as they pass you by  
The day will be here soon  
Dreams are dancing in the children's eyes  
Hearts are singing, bells are ringing too

It's the spirit of the season  
Filling hearts with love and care  
Like a shining star, it glistens  
Everywhere, feel it there, like a prayer  
Whatever it is, you need to share it

It's the spirit of the season  
It's the spirit of the season  
Snow is falling as you rush downtown  
The city seems to glow  
Laughter mixes with the happy sounds  
Hearts are singing, bells are ringing too

It's the spirit of the season  
Filling hearts with loving care  
Like a shining star, it glistens  
Everywhere, feel it there, like a prayer  
Whatever it is, you need to share it

It's the spirit of the season  
You can hear it in the air  
It's the spirit of the season  
You can hear it everywhere  
Fa la la la la!





# Program

## WELCOME & INVOCATION

- JINGLE BELLS ..... MACK WILBERG
- PAT-A-PAN ..... *Arr.* BARLOW BRADFORD
- SPIRIT OF THE SEASON ..... GLEN BALLARD & ALAN SILVESTRI  
*Arr.* ROBERT STERLING
- GLORIA IN EXCELSIS From Lux ..... DAN FORREST
- O MAGNUM MYSTERIUM ..... TOMÁS LUIS DE VICTORIA  
*Edited:* ALICE PARKER & ROBERT SHAW
- THE MANGER OF BETHLEHEM ..... JOSIAH G. HOLLAND  
*Music by:* ROB GARDNER
- BUGLER'S HOLIDAY ..... LEROY ANDERSON

---

## INTERMISSION

---

- MARY, DID YOU KNOW? ..... MARK LOWRY  
*Arr.* BUDDY GREENE
- SLEIGH RIDE ..... FREDERICK DELIUS
- I SAW THREE SHIPS ..... *Arr.* MACK WILBERG
- HOW FAR IS IT TO BETHLEHEM? ..... *Arr.* MACK WILBERG
- BABY, WHAT YOU GOIN' TO BE? ..... NATALIE SLEETH
- CHRISTMAS OVERTURE ..... SAMUEL COLERIDGE-TAYLOR
- World Premiere Performance*  
I HEARD THE BELLS ON CHRISTMAS DAY ..... HENRY WADSWORTH LONGFELLOW  
*Arr.* STEPHEN WEATHERFORD  
*Narrated by:* Richard Manwaring
- ANGELS WE HAVE HEARD ON HIGH ..... *Arr.* BARLOW BRADFORD

Tickets for our March Concert 'There Is Sunshine In My Soul Today' are on sale now.  
Please see the back cover for concert details.



# Ensign's Conductors



## **STEVE DANIELSON**

Ensign Symphony & Chorus Conductor

Steve Danielson is currently working on a D.M.A. in Choral Conducting at the University of Washington under the mentorship of Dr. Geoffrey Boers. His research areas include Slovak choral music, improvisation in the choral classroom, and the folk songs of Carrie Grover. He earned his M.M. in Choral Conducting from the University of Memphis and a B.A. in voice from Brigham Young University. He spent 11 years directing choirs at Germantown High School in Germantown, TN.

In addition to directing choirs, Steve also works as a musical director for high school, community, and children's theaters and has been nominated for Outstanding Musical Direction, which he won in 2010. In 2014, he wrote, directed, and starred in the original musical *Here to Stay: The Joseph Stay Story*. He is an active vocalist, conductor, and composer and holds membership in ASCAP and ACDA. For more information about his conducting pursuits as well as his compositions, visit his website at [SDCompose.weebly.com](http://SDCompose.weebly.com). He tries not to take himself too seriously. Steve and his wife, Angi, have seven children and live in Lacey.



## **CHASE CHANG**

Ensign Symphony Conductor

Chase Chang holds an M.M. in Conducting from Brigham Young University, a B.A. and B.M. in Music Education from the University of Washington, and is National Board certificated in music education. He studied violin with Walter Schwede, oboe with principal Chicago Symphony oboist Alex Klein, and conducting with Kory Katseanes.

Mr. Chang is the co-founder of the Summer String Academy, a summer orchestra camp where middle school students connect and learn from professional musicians. He conducted for the Issaquah Middle School Honor Orchestra and Student Orchestras of Greater Olympia Organization (SOGO); coached winds and strings for the Tacoma Youth Symphony, Everett Youth Symphony and SOGO; and taught music theory at summer camps.

Currently, Mr. Chang teaches orchestra in the Bellevue School District at Odle Middle School. Over his career, he has taught band, choir and orchestra to students in grades 4-12. In this time, he premiered a piece by nationally-acclaimed composer Richard Meyer, featured Bellevue High School in Carnegie Hall, and led his students to earn countless superior ratings and ranks. Because of his outstanding work, Mr. Chang is sought by his peers and is regularly employed as clinician, judge, and guest conductor around the Puget Sound.

As a long-time member of the Washington Music Educator's Association, he served as manager in five WMEA All-State/All-Northwest high school symphony groups. Mr. Chang was elected to serve as Orchestra Curriculum Officer of the Washington Music Educators Association, a position in which he currently serves.

Mr. Chang held positions as the artistic director and principal conductor of the Issaquah Philharmonic Orchestra. As a performer, Mr. Chang was principal oboe position in the Puget Sound Symphony Orchestra. He currently resides in Renton with his wife, Christi, and three children.



# Youth & Children's Conductor



## SHARLA DANCE

Ensign Youth & Children's Choirs Conductor

Sharla Dance holds a B.M. in Music Education from Brigham Young University with an emphasis in choral conducting. Her post graduate studies include how the child's brain learns music, advanced choral conducting, and piano improvisation. She has Kodaly and Orff certifications as well as advanced vocal training for teaching the teen voice. Sharla has written a book called *To Teach a Child a Song* and teaches workshops all over the United States to Primary music leaders about good principles for teaching children to sing. For the last 30 years Sharla has conducted youth choirs, ranging in number from 70 to 180 youth, depending on the year. Sharla has a private music studio teaching piano, music literacy, and voice called Dance, Sing, and Play. She loves conducting choirs and teaching music to children.

## Sharla's Note

Can you hear a child standing at the bedside of a newborn and asking, "Hi, baby! What are you going to be when you grow up?" Can you envision a youth shyly asking the mother of Jesus, "Did you know what Jesus was going to be when he grew up?" The honest questioning of a child comes from an open heart. Consider the question, "How far is it to Bethlehem to just be by the Christ child? I would really like to go and be by him."

Listen tonight as the children sing these questions and more. They have a way of opening their hearts and being all in as they sing...and it pulls those of us who hear them fully into the experience. Can we open our hearts to things that really matter as we listen?

It has been an amazing adventure for the children and for us as volunteers to be part of the team for Ensign Youth & Children's Choirs. I love how the youth and children in this choir are choosing to lift others and serve as they follow our motto, "Children serving children."

I love how AMAZING volunteers have stepped up by the dozens to help the children grow and learn and lift. I'm excited for what's ahead for Ensign's Youth & Children's Choirs as we ramp up to lift children, not only in our local area, but around the globe as we venture into the YouTube video arena.

As I contemplate all that is ahead, I wonder at each youth and child, and ask, "What you goin' to be?" I think my answer as I watch is "Something wonderful!"

**Sharla Dance**

Ensign Youth & Children's Choirs President



# I HEARD THE BELLS ON CHRISTMAS DAY

*Text by Henry Wadsworth Longfellow*

I heard the bells on Christmas Day  
Their old, familiar carols play,  
and wild and sweet  
The words repeat  
Of peace on earth, good-will to men!

And thought how, as the day had come,  
The belfries of all Christendom  
Had rolled along  
The unbroken song  
Of peace on earth, good-will to men!

Till ringing, singing on its way,  
The world revolved from night to day,  
A voice, a chime,  
A chant sublime  
Of peace on earth, good-will to men!

Then from each black, accursed mouth  
The cannon thundered in the South,  
And with the sound  
The carols drowned  
Of peace on earth, good-will to men!

It was as if an earthquake rent  
The hearth-stones of a continent,  
And made forlorn  
The households born  
Of peace on earth, good-will to men!

And in despair I bowed my head;  
“There is no peace on earth,” I said;  
“For hate is strong,  
And mocks the song  
Of peace on earth, good-will to men!”

Then pealed the bells more loud and deep:  
“God is not dead, nor doth He sleep;  
The Wrong shall fail,  
The Right prevail,  
With peace on earth, good-will to men.”



# Stephen Weatherford's *Arrangement of I Heard the Bells on Christmas Day*

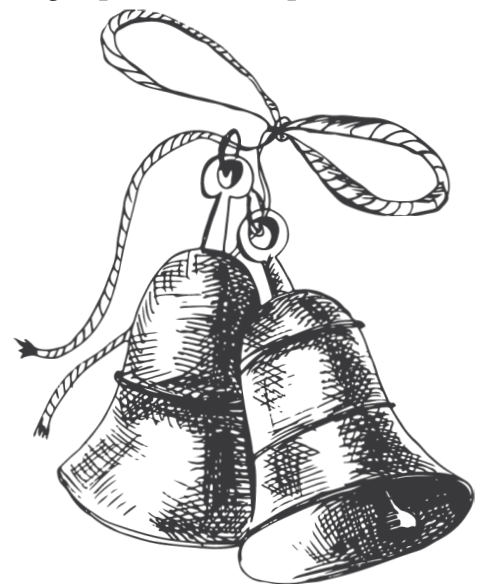
A little over a year ago, Andy Pope (then Ensign's president) approached me and asked if I would be interested in writing music and accompaniment for a narrative about Henry Wadsworth Longfellow's "I Heard the Bells on Christmas Day." I've always loved its lyrics, but this has never been my favorite carol as it tends to be sung slowly and because the standard bass line, intended to sound like bells, ends up feeling more like a dreary parade march. However, it began to speak to me after I worked to make the music flow better. Each verse was a challenge, though, as each brought out different feelings and needed a different musical approach.

In order to understand the music better, I sought to research the circumstances which led Longfellow to write this beautiful poem, but history on the actual writing of the poem turned out to be scarce and contradictory. However, I found plenty about his life in the years that preceded it. His journal spoke especially of his love for his first wife, whom he lost during a miscarriage, of his courtship and love for his second wife and their children, the deep sorrow and depression he experienced after his wives' tragic deaths, and his faith that remained strong through all of this.

I very much wanted to include the two verses specifically about the Civil War which are not usually sung with the carol, because they provide context for the verse starting "And in despair I bowed my head." That led me to research his thoughts about slavery and the circumstances leading to the war, plus the various songs that were used to garner support on both sides of the conflict. By the time I was done, the verses had come to life for me, and I ended up writing the narration myself.

After a year and over 150 hours of work, the arrangement has blossomed into a much more ambitious project than I had originally envisioned. My hope is that it conveys at least some of the feelings and experiences that Longfellow endured and helps bring to life for you his incredible faith and optimism as he wrote, "God is not dead, nor doth he sleep; The Wrong shall fail, the Right prevail, With peace on earth, goodwill to men!"

**Stephen Weatherford**  
Ensign Pianist





# Ensign Symphony & Chorus

## 2018-2019 SEASON MEMBERS

### SOPRANO

Rachel Alldredge  
Missy Jensen Crump  
Melissa Dempsey  
Katie Elledge  
Ella Fish  
Lynne Hennessey  
Charlene Jensen  
Shanda Jones  
Sarah Loveless\*  
Kayla Lyons  
Jennifer Maner  
Chanin Mauery  
Chantelle Oppie  
Anne Marie Otañez  
Melissa Peterson  
Maer Robertson#  
Diana Schill  
Stephanie Shipley  
Joellie Smart  
Kathryn Smart  
Renée Smart  
Mindee Viscalla  
Lynn Watkins

### ALTO

Keiko Agate  
Ruth Bascom  
Krista Lee Bement  
Wendy Bird#  
Kim Blackner  
Janice Blackhurst  
Anne Christiansen  
Sharla Dance  
Wendy Davis  
Nancy del Plain  
Candace Duce  
Janelle Dudley  
Mallory Douge  
Debi Fairbanks  
Jodi Fowles  
Christine Gifford

### ALTO (Continued)

Becky Johnson  
Patty Lee  
Sheila Madsen  
Sarah Murdock  
Charlotte Reese\*  
Maggie Reno  
Annika Riddle  
Ruth Ann Shannon  
Sue Smith  
Jamiee Smith-Kesterson  
Jennifer Stallings  
Nadine Sundblom  
Alisa Tilley  
Elaine Tsang  
Sarah Ulrich

### TENOR

Luke Bailey  
Karen Barkley  
Steve Bement  
Angela Cox#  
Carl Cutler  
Joe Johnson  
Duane Jones  
Michael King  
Jared Loveless  
Greg Miller  
Enoch Sinclair  
Vince Summerhays  
Aaron Ulrich  
Garrison Ulrich  
Laura Zurligen

### BASS

Dave Alldredge  
Steve Bean  
Daniel Booher  
Mark Calkins  
Lee Donnahoo  
David Florer  
Chris Hall  
Peter Henderson#  
Sid Herron  
Clair Jenkins  
Jeff Jones  
Rob Musselman  
Bryon Perry  
Kevin Perry  
Robert Plotts  
Steve Snow  
Nick Stetich  
Ed Thompson  
Trevor Tsang  
Lee Zurligen

### VIOLIN 1

Nathan Rodahl\*\*  
Anna Johnson†  
Dennis Haack  
Lavinia Hardcastle  
Colin Hetherington  
Jennifer Warner

### VIOLIN 2

Alison Richards\*  
Natalie Bateman  
Sheila Bateman  
Claire Casperson  
Mary Kendall

### VIOLA

Kirk Price\*  
Laura Haack  
Mary Jarvis  
Gwen Kelts

### CELLO

Jeanee Maucotel\*  
Natalie Adams  
Morven Balmidiano  
Kumiko Chiba  
Emma Mitchell  
Juha Niemisto  
Adam Rubek  
Sharon Wong

### BASS

Tim Hoyt\*  
Paul Nelson

### HARP

Julie Jarvis\*

### PIANO

Stephen Weatherford

### FLUTE

Rose Johnson\*  
Travis Mercado  
Joanna Tse

### PICCOLO

Joanna Tse

### OBOE

Julie Fay\*  
Hayley Monk

### ENGLISH HORN

Julie Fay

### CLARINET

David Bissell\*  
Ben Fowler

### BASSOON

Shannon Nelson\*  
Titan Rodick

### HORN

Sally Hadzimuhovic\*  
Kerri Bridges  
Oleg Gouts  
Robin Miller

### TRUMPET

David Harkness\*  
Todd Gugler  
Peter Nelson-King

### TROMBONE

Ryan Shepherd\*  
John Ochesenreiter

### BASS TROMBONE

LaMont Lee

### TUBA

Václav Novák

### PERCUSSION

Nathan Davis  
Hannah Lee  
Michael Lewis  
Garrett Rolfson

### TIMPANI

Adam Richards\*

\*\*Concertmaster, †Assistant Concertmaster, \*Section Leader, #Section Secretary

# ENSIGN SYMPHONY & CHORUS

## *Leadership Team*

### **PRESIDENCY**

Anne Christiansen – Interim President  
Kim Blackner – Executive Secretary  
Julie Jarvis – VP of Symphony  
Renée Smart – VP of Chorus  
Jennifer Stallings – VP of Communications  
Jodi Fowles – Director of Branding  
Scott Sundblom – Director of Marketing  
Elaine Tsang – Director of Volunteerism  
Rachel Alldredge – Treasurer

### **BOARD**

Spencer Oliver – Chair  
Neal Christiansen – Vice-Chair  
Rob Archibald  
Brenda Boyd  
Chris Hall  
Bryon Madsen  
Richard Manwaring  
Gary Smart – Financial Officer

### **YOUTH & CHILDREN'S CHOIRS PRESIDENCY**

Sharla Dance – President  
Launi Ritter – Executive Secretary  
Lee Donnahoo – VP of Production  
Lynette Bell – Choir Secretary  
Colette Moss – Treasurer

## *Volunteer Team*

### **CHORUS**

Krista Lee Bement – Lead Chorus Recruiter  
Kim Church – Chorus Recruiter  
Candace Duce – Social Events  
Chris Hall – Rehearsal Venue Coordinator  
Joe Johnson – Music Librarian  
Sarah Loveless – Chorus Recruiter  
Rob Musselman – Prayer Coordinator  
Chantelle Oppie – Social Events, Historian  
Charlotte Reese – Assistant Choral Conductor  
Diana Schill – Chorus Recruiter  
Sue Smith – Accountant  
Steve Snow – Chorus Recruiter  
Stephen Weatherford – Rehearsal Pianist

### **PRODUCTION**

Christine Gifford – Wardrobe Coordinator  
Peter Henderson – Seating Coordinator  
Paula Church – Stage Decorations

### **DEVELOPMENT**

Kerri Findlay – Ticketing Coordinator  
Amanda Brown – Assistant Ticket Handler

### **SYMPHONY**

Rose Johnson – Personnel Director  
Titan Rodick – Music Librarian

### **YOUTH & CHILDREN'S CHOIRS**

Rachel Alldredge – Conductor  
Erin Egbert – Conductor  
Nicole Hudson – Conductor  
Nicki Lasky – Conductor  
Laura Mills – Conductor  
Stephanie Shipley – Conductor  
Marcy Candland – Accompanist  
Jen Olson – Accompanist  
Michael Young – Accompanist

### **COMMUNICATIONS**

Anne Christiansen – Email Campaigns  
Candace Duce – Social Media  
Gerlinde Gilmore – Photographer  
Sarah Loveless – Social Media  
Maggie Reno – Web & Graphic Designer  
Nadine Sundblom – Social Media

### **YOUTH & CHILDREN'S TEAM**

Amanda Beckstead – Music Librarian  
Lee Donnahoo – Sound & Lights  
Joanne Linerud – Ticket Sales  
Katie Lisonbee – Wardrobe and Costume  
Mike Lockard – Graphic Design  
Jae Lykken – Photography & Video  
Brittany Ogden – Facebook Account  
Debby Peck – Carpool Coordinator  
Lindsay Price – Handbook Revision  
Christina Swenson – Hair and Makeup  
Dawn Zorer – Attendance

### **YOUTH COUNCIL**

Ryan Linerud – President  
Leah White – Vice-President  
Patrick Donnahoo  
James Monson  
Christi Norris  
Emily Richins  
Warnick Seamons



# Ensign Youth & Children's Choirs

## 2018-2019 SEASON MEMBERS

### CHILDREN'S CHOIR

Mylie Ahlstrom  
Ammon Alldredge\*  
Noah Alldredge  
MJ Arnott  
Annie Astle  
Ellie Astle  
Leah Astle  
Mason Beckstead  
Charlotte Black  
Izzy Callens  
Rylee Candland  
Arleth Ceballos  
Clara Dahl  
Sophia Dahl  
Elyse Darrington  
Kian Darrington  
Abigail Dempsey  
Olivia Eden  
Cole Egbert  
Dottie Erickson  
Carter Green  
Max Green  
Ellie Hagen  
Ella Harman  
John Harman  
Emma Hawkins  
Natalia Henneman  
Sonja Henneman  
Brynley Howell  
Charity Hudson  
Jacob Hudson  
Audrey Jenkins  
Hanna Kelley  
Vivian Leishman  
Ellie Leonard  
Megan Linerud  
Preston Loftus  
Carmen Loveless  
Cohen Lykken  
Kyla Mills

### CHILDREN'S CHOIR

(Continued)  
Melia Mills  
Edith Monson  
Emily Morgan  
Rachel Morgan  
Callie Moss  
Kinley Moss  
Calli Odom  
Maddy Ogden  
Thatcher Olson  
Emily Orton  
Dallin Owens  
Madeleine Peck  
Evelyn Perry  
Emily Price  
Mara Richey  
Parker Richey  
Kate Richins  
Bridget Riddle  
Samantha Schurig  
Rachel Shannon  
Spencer Shannon  
Cate Shipley  
Connor Smart  
Cassidy Stallings  
Nathan Stallings  
Ella Sundelin  
Lydia Swenson  
Jenna Thomas  
Olivia Van Leuven  
Sophia Van Leuven  
Eliza Volmer  
Braden Watkins  
Sammy Watkins  
Jenae Watts  
Leah Weller  
Afton Wheeler  
Summer Wheeler  
Lyla Wright  
Jeanette Wung

### YOUTH CHOIR

Elise Anderson\*\*  
Meili Bean  
Abby Beckstead  
Dallin Bishopp\*\*  
Chris Bullock\*\*  
Anne Callens  
Aubrey Cook  
Evie Darrington  
Patrick Donnahoo  
Emma Erickson  
Handrae Henthorn  
Tabrina Henthorn  
Benjamin Hudson  
Celeste Hudson  
Joseph King  
Ryan Linerud  
Ashley Lisonbee  
Olivia Loughran  
Kayla Ludlow\*\*  
Ben Maier  
Lucy Maier  
Ariana Mauery  
Holly Mauery  
James Monson  
Liesl Monson  
Lydia Morgan  
Ashley Morrison  
Lizzie Nay  
Christi Norris  
Dallin Olson  
Alyssa Owens  
Kate Peterson  
Emily Richins  
Zander Schwartz  
Warnick Seamons  
Henry Shriber  
William Shriber\*\*  
Andrew Stapley  
Leah White  
Rachel Zorer

\*Soloist for *Manger of Bethlehem* \*\*Soloists for *Mary, Did You Know?*

### TRAINING CHOIR

Bella Ceballo • Cory Christiansen • Derek Christiansen • Emery Dahl • Greyson Egbert • Anne Hansen • Savannah Howell  
Jarom Hudson • Skylar Jenkins • Simon Monson • Julia Morgan • Kimball Olson • Ashlynn Owens  
Jane Peterson • Owen Shriber • Ruby Wright • Oceanna Wung

# THE MANGER OF BETHLEHEM

*Text by Josiah G. Holland*

There's a song in the air! There's a star in the sky!  
There's a Mother's soft prayer and a baby's low cry!  
And the star rains its fire while the beautiful sing,  
for the manger of Bethlehem cradles a King!

There's a tumult of joy o'er the wonderful birth,  
for the virgin's sweet boy is the Lord of the earth.  
And the star rains its fire while the beautiful sing,  
for the manger of Bethlehem cradles a King!

And we look to the star while the beautiful sing  
to the manger of Bethlehem.

We rejoice in the light, and we echo the song  
coming down through the night from the heavenly throng.  
And the star rains its fire while the beautiful sing,

For the manger of Bethlehem cradles a King!







**Thymelapse**  
STUDIOS

Professional Photography

Bellevue WA  
425.241.5386

thymelapsestudios.com



Proud Supporter of  
Ensign Symphony and Chorus  
since 2013

**YOUR AD HERE**

Ensign is a 200 member Symphony and Chorus that performs inspiring sacred and secular music at Benaroya Hall, Seattle. Last season we sold 800 season tickets and had a completely sold out concert with 2,500 in the audience. We hold 5 concerts per season. Our next concert is March 1st.

BUSINESS CARD \$50  
QUARTER PAGE AD \$75  
HALF PAGE AD \$140  
FULL PAGE AD \$200  
\*Prices are for an Ad in one single program.

Please email: [jenspiration@gmail.com](mailto:jenspiration@gmail.com)

 [seattleensign.org/advertise](http://seattleensign.org/advertise)

**AMERICAN**  
**CRAWLSPACE & PEST SERVICES**



**Insulation & Pest Control**

- ◆ Insulation Removal & Installation
- ◆ Odor Elimination & Sanitizing
- ◆ Vapor Barrier Replacement
- ◆ Heat Duct Sealing & Insulation
- ◆ Water Pipe Insulation
- ◆ Crawl Drainage & Sump Pumps
- ◆ Full Service Pest Control

*Serving our community for over 20 years.*



Before



After



**Paul Thompson**  
owner



**Mark Lee**  
owner

Free Inspections ◆ Energy Rebates

Toll Free **1-800-965-9692**

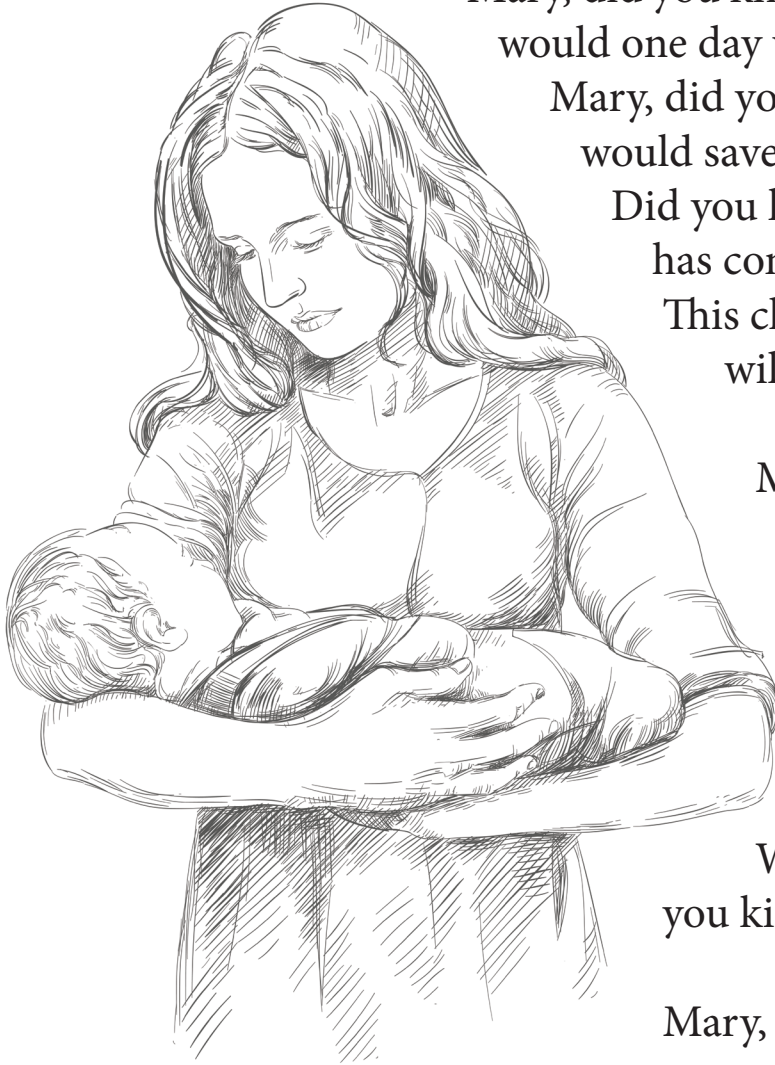
[www.AmericanCrawl.com](http://www.AmericanCrawl.com)

Family Owned & Operated

Licensed ◆ Bonded ◆ Insured ◆ Lic#AMERIC911J8

# MARY, DID YOU KNOW?

*Text by Mark Lowry*



Mary, did you know that your baby boy  
would one day walk on water?

Mary, did you know that your baby boy  
would save our sons and daughters?

Did you know that your baby boy  
has come to make you new?

This child that you've delivered,  
will soon deliver you.

Mary, did you know that your baby  
boy will give sight to a blind man?

Mary, did you know that your  
baby boy will calm the storm  
with his hand?

Did you know that your baby boy  
has walked where angels trod?

When you kiss your little baby,  
you kiss the face of God.

Mary, did you know?

The blind will see, the deaf will hear, the dead will live again.  
The lame will leap, the dumb will speak the praises of the Lamb.

Mary, did you know that your baby boy is Lord of all creation?  
Mary, did you know that your baby boy would one day rule the nations?

Did you know that your baby boy is heaven's perfect Lamb?

This sleeping child you're holding is the great I Am.

Mary, did you know?





ENSIGN SYMPHONY PRESENTS

# Rhapsody

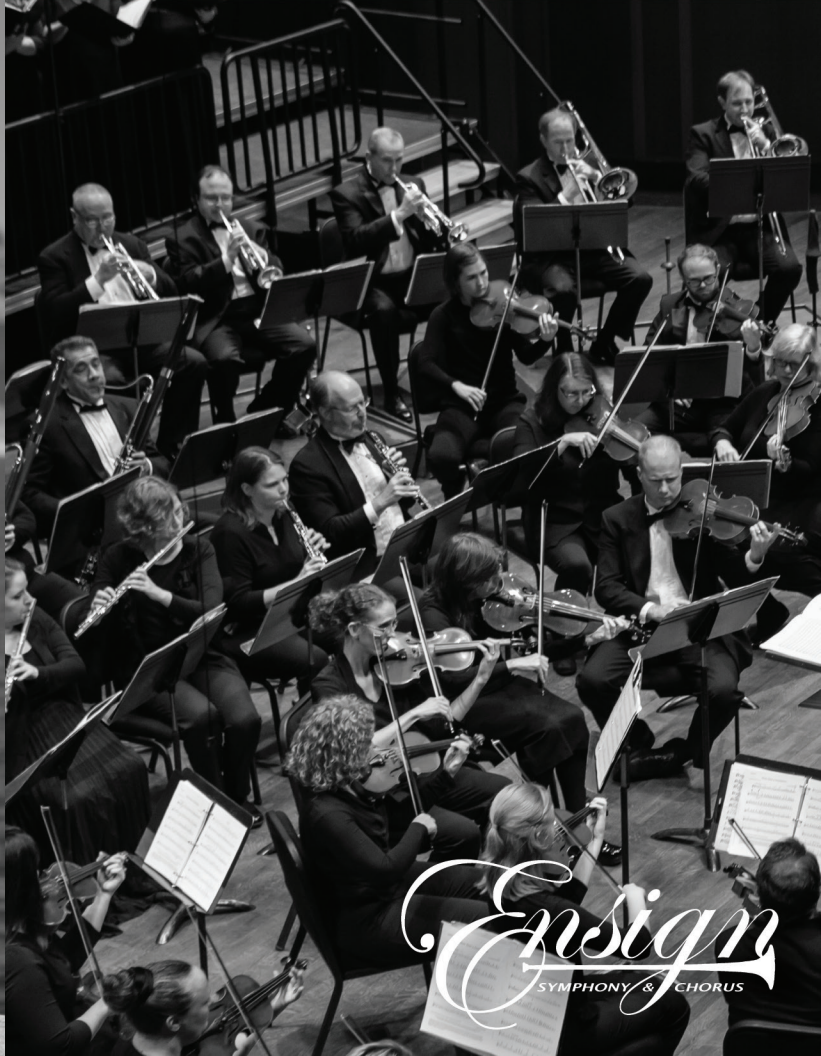
*Featuring Jenny Oaks Baker*

Friday, April 5, 2019 7:30PM  
Benaroya Hall, Seattle

---

Tickets on sale now: [seattlensign.org/tickets](http://seattlensign.org/tickets)

Chase Chang & the Ensign Symphony present Rhapsody. An evening of adventure, mystery and intrigue. They will be honored to share the Benaroya Hall stage with virtuoso violinist, Grammy-nominated, Jenny Oaks Baker.





*A Modest Choice  
Bridal*

Call for your private appointment.  
425-652-1535  
www.amodestchoice.com

Modest gowns by:  
Allure Bridals  
Mon Cheri  
Venus Bridal  
Saphia Blue by ECD

Follow us on  
Facebook  
Instagram

Located in Bellevue Wa



samantha  
kunz

PHOTOGRAPHER

samikunzphoto@gmail.com · snohomish, wa ·  
samikphoto.wixsite.com/mysite



**PRINT  
SOLUTIONS  
INCORPORATED**

*Big city quality, small town service*

tel: 253.435.1928  
print@puyallupsbest.net



10213 139th st crt e, suite b-2 • puyallup washington 98374

TRADITIONAL  
OFFSET  
DIGITAL FULL  
COLOR  
BINDERY  
MAILING  
GRAPHIC  
DESIGN



**Specialty Printing**

Screen Printing - Promotional Products  
Embroidery - Sublimation - Vinyl

**253-268-0744**

eagleinksp@yahoo.com  
eagleinkpromos.com



JOIN US IN THANKING ALL

*Our Generous Donors*

**CONDUCTOR'S CIRCLE**

**GOLD**  
**MICROSOFT**  
**SPENCER & AIMEE OLIVER**

**SILVER**  
**JEANNE QUINTON**

---

**FOUNDERS' CIRCLE**

**CHAMPION**  
The Boeing Company

**STANDARD BEARER**  
Steven & Ruth Bascom • Lonnie & Brenda Boyd  
Alan & Deborah Doman • Mark & Patty Lee

**THE FOUNDERS' HERALD**  
Neal & Anne Christiansen • Fowkes Family • Community Aid Fund  
Joseph & Erin Gee • Christopher & Michelle Hall • Dan & Mary Ann Heine  
Gregory & Pamela Keys • Ed & Barbara Lee • QCA Holdings LLC • Joelle Slaugh

---

**FRIENDS OF ENSIGN**

**SUSTAINING FRIEND**  
Amazon Smile - Jeannette Allen - Marshall & Shandell Baker - Don & Judy Bishop - Gordon & Myrna Conger  
Dan & Christian Fricke - Josh & Melodie Gardner - Craig & Holly Jolley - Jim & Louise Nelson - Bryon Perry  
Michael & Sue Smith - Dick & Nancy Van Horn - Hilary Weeks

**SUPPORTING FRIEND**  
Bonnie Thomas Studio of Music - Richard Bullard - Dave & Paula Church - Kim & John Church  
Bob & Ingrid Fuhriman - Cheryl Kirby - Richard & Melody Manwaring - Darrel & Laurie Perry  
Gary Peterson - Anthony & Rebecca Schofield - Jennifer & Bryan Stallings - Richard & Dianne Beaudry

**CONTRIBUTING FRIEND**  
Stan & Jackie Byrd - Anthony Criddle - Donald Eastman - Kathy Ewing - Benjamin Flower  
Al & Christine Gifford - James & Marnie Hadley - Steve Hughes - Gary D Jones - Joe Jones  
Dick & Karen Knight - Gregory McCall - Tori McFall - Staten Medsker - Thomas Olson - Justin Park  
Mary Platzke - Don & Linda Pope - Tiffany Rainey - Richard Rose - Mitsue Schilling - Kevin & Cathy Seeley  
Eric & Stephanie Shipley - Nathan Smith - John Song

**DONATIONS IN KIND**  
Jackie Archibald - Gregory Burdge - Anne Christiansen - John & Kim Church - Anthony Criddle - LeAnne Draney  
Deana & Rob Fuhriman - Ingrid & Bob Fuhriman - Gerlinde Gilmore - Kent Harrison - Sarah Loveless - Bryon & Sheila Madsen  
Tom & Monica Massey - Matt & Maggie Reno - Ruth Ann Shannon - Stephanie Shipley  
Enoch Sinclair - Sue Ellen & Bret Vincent - Stephen Weatherford

---

Your generous donations enable us to continue performing inspiring music and bring guest artists from around the world to our stage. We are a 501(c)(3) non-profit organization, and there are multiple ways to contribute. Please consider supporting Ensign Symphony & Chorus (Tax ID: 46-1780954) at [seattleensign.org/donate](http://seattleensign.org/donate), through your employer's Matching Funds Program, or through your purchases at AmazonSmile. Thank you for your support!





# ORCHESTRA CAMP

A UNIQUE OVERNIGHT CAMP IN ELLENSBURG, WA  
"CONNECTING MIDDLE SCHOOL STUDENTS WITH PROFESSIONALS"



**Early Bird discount ends April 15, 2019**



**Session I: July 14-19 Grades entering 6-9 in Fall of 2019**  
**Session II: July 21-26 Grades entering 7-9 in Fall of 2019**

**Bus available from Bellevue High School**



Large and Small Ensembles  
Tutoring from Professional Guest Artist  
Creek Float  
Archery  
Ziplining



Music Theory  
Ropes Course  
Delicious food  
Arts and Crafts  
Water Olympics

**New this year: Conducting elective taught by Maestro Chase Chang**

[program@lazyfcamp.org](mailto:program@lazyfcamp.org) (509) 962-2780  
[www.SummerStringAcademy.com](http://www.SummerStringAcademy.com)



ENSIGN SYMPHONY & CHORUS PRESENTS

THERE IS *Sunshine*  
*in my soul* TODAY

Friday, March 1, 2019 7:30PM  
Benaroya Hall, Seattle

---

Tickets on sale now: [seattleensign.org/tickets](http://seattleensign.org/tickets)

FOLLOW US:

 [facebook.com/seattleensign](https://facebook.com/seattleensign)

 [instagram.com/seattleensign](https://instagram.com/seattleensign)

 [seattleensign.org](http://seattleensign.org)

*Ensign*  
SYMPHONY & CHORUS